



2020-2021 ANNUAL REPORT

Achievements, performance,
goals & highlights



- President & CEO's Letter
- 2020-2021 By the Numbers
- Financial Activities & Position
- Building for Recovery Campaign Updates
- Campaigns Launched in 2021

Lifetime is Recovery Strong

LETTER FROM THE PRESIDENT & CEO



David A. Phipps

A Recap of our Progress and Hope for the Future

We are so pleased to present this annual report to you, our supporters and friends. As you know, 2021 was every bit as challenging as 2020. We had hoped for a break in the pandemic, but we adapted yet again so we could continue to provide treatment and care for those suffering from mental health and substance use disorders. With the ever-increasing stress on individuals, families, and communities, cutting back on services was just not an option. We continued to provide in-person residential care in a safe and caring environment. Our outpatient services expanded with the use of telehealth and became very adept at the use of remote technology. I am so proud of our dedicated counselors, direct care team members and administrative staff, who adapted to often changing protocols and procedures with grace and good humor.

In addition to the pandemic, we were faced with the winter storm the size of Texas! While we did not lose utilities, some staff members were stuck at home unable to travel to work, as others were stuck at work and could not leave for more than 36 hours. Our direct care team and kitchen staff kept everyone safe and well-fed even as we had to call for emergency plumbing services. Luckily the construction crew working on our campus expansion project had plumbers readily available to restore service. This tested our emergency preparedness plans to the fullest.

Speaking of the construction progress, we are excited to announce that we have completed Phase I on time and under budget! We opened the new William T. and Ila Faye Miller Dining Hall which includes a new, state-of-the-art kitchen; also all new campus-wide infrastructure upgrades, new recreational facilities, plus a new maintenance and facility management building were completed.

We proudly stepped up to the plate implementing new programs to assist with Bexar County jail diversion and reduction policies; providing care to those who need treatment rather than incarceration. Our support also included programs for those enrolled in therapy courts, Adult Drug, DWI, and Reflejo – all designed to bring people back as productive members of society. In addition, we worked diligently with clients referred from the Texas Department of Family Protective Services, as they received treatment for co-occurring mental health and substance use disorders and thus restoring families to positive relationships.

So, we look forward to 2022, as we begin Phase II of our Building for Recovery construction project, which will add 60 beds and new counseling offices to our Southton Road campus. With the help of Bexar County, we were able to complete the funding of this phase and begin construction. Watch for updates as we progress through the year.

Lastly, thank you to our foundation, corporate and individual donors who remain committed to Lifetime Recovery and our mission. With your support and our collaborations with government and local partners we are able to bridge the gap in services to those who need them the most. Thank you for joining with us in the fight against mental health and substance use disorders.

David A. Phipps
President & CEO

Board of Directors

Rudy Lopez, Board Chair
Brandon Webb, Vice Chair
Trey Scott, Secretary
John Hornsby, Treasurer
Jeffrey Arndt
Jeffrey Butts
Jay Eisen
Don Hanson
Al Hartman III
Cynthia Hernandez
Kay Mijangos
G. Sterling Zinsmeyer

2020-2021 By the Numbers



557

Residential Treatment Clients

Lifetime's residential treatment program focuses on Cognitive-Behavioral Therapy and Trauma Informed Care. Counselors recognize that clients are likely to have suffered a history of trauma and understand the role trauma may play in a client's addiction. Hence, counseling in one-on-one and group settings is focused on working through the trauma to help prevent relapse.

1,156

Outpatient Clients



"At Lifetime, I learned that my illness does not define me and that I am capable of being a good person and a great mother. I am so grateful there are people willing to support Lifetime because it is not just a building, this is a place where livelihoods are at stake. Lifetime is the HOPE, without it, my story would not be the same."

- Courtney, Lifetime Alum



66%
OF CLIENTS
COMPLETED
TREATMENT PROGRAMS



1,713

Recovery Links Clients

Lifetime's Recovery Links program consists of recovery coaching and recovery supportive services. This program addresses barriers that prevent a person from recovery and are not just focused on abstinence.

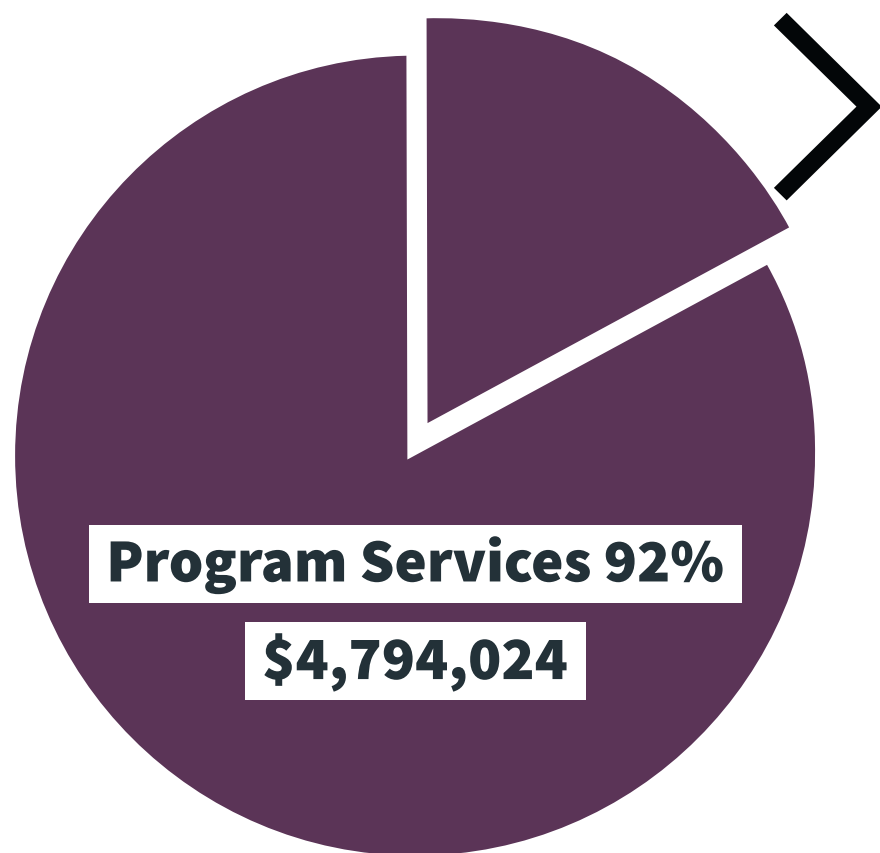
NOTE: Some photographs used in this document were taken prior to the implementation of COVID-19 protocols.

Financial Activities 2020-2021

Revenue \$8,209,722



Expenses \$5,238,043



Administration 4%

\$269,692

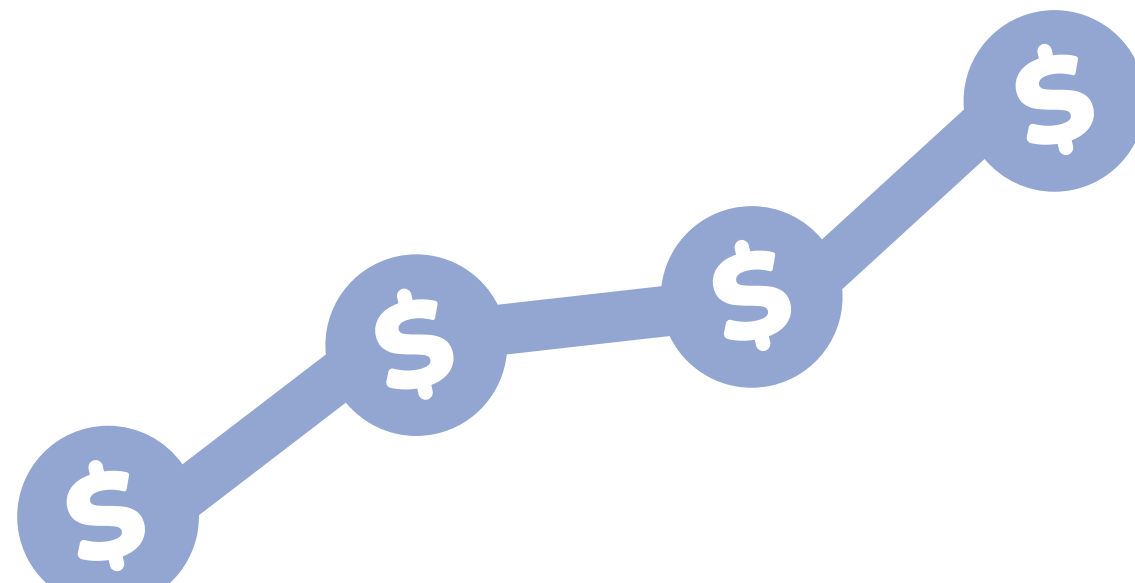
Fundraising 4%

\$174,327

Program Services 92%

\$4,794,024

*Please note that over \$2.84 million were restricted funds for the ongoing Building for Recovery building capital campaign project and a designated fund. These dollars were not used for general operations.



Financial Position 2020-2021

Total Assets \$7,779,788

Cash	\$1,342,819
Accounts Receivable	\$1,859,844
Property & Equipment	\$4,447,626
Prepaid Expenses	\$27,705
Pledges	\$93,263
Other Assets	\$8,531

Total Liabilities & Net Assets \$7,779,788

Current Liabilities	\$840,661
Long-Term Liabilities	\$149,688
Net Assets	\$6,789,439



Lifetime's Building for Recovery Project

Phase I completed November 2021



New Maintenance Building

Construction on the first phase of the Southton campus Building for Recovery project began in October 2020 and was completed in November 2021.

These enhancements have modernized our campus and are providing an environment that offers clients the level of dignity they deserve while in recovery treatment programs.



New Dining Hall

Renovations and completed construction includes underground infrastructure such as electrical, plumbing and drainage upgrades...



New Kitchen

A brand new state-of-the-art kitchen, dining hall, flexible community space, facilities maintenance and laundry building, recreational and campus grounds (including a basketball court, jogging trail and sand volleyball court) and improvements to the campus entrance and parking lot.



New Basketball Court

Building for Recovery *continued*

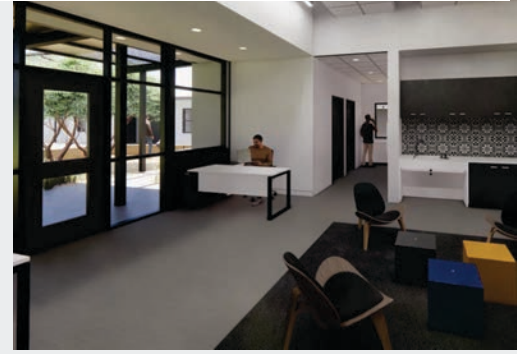


What's Ahead

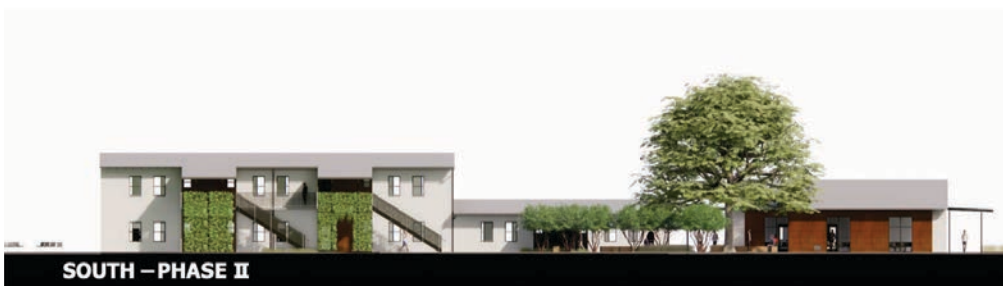
Next Phase Underway!

In the summer of 2021, Lifetime Recovery was able to secure funding for the next phase of our Building for Recovery project. This phase includes the construction for an additional 60-bed residential complex that includes counseling and group rooms which will enhance treatment services and recovery. This complex will consist of four-person residential units with en suite bathrooms.

We look forward to the completion of our Southton campus renovations and expansion to meet the growing client need. Once completed it will be revitalized from a state of decline to a renewed and with up-to-date facility, while honoring its historic nature. Follow us on social media, our website or sign up for our monthly newsletter to stay updated on our progress.



Phase II Construction Renderings



Campaigns Launched in 2021

The Journey Society

The Journey Society was established to recognize and thank those of you who have included Lifetime Recovery in your estate plans either through your will, trust, retirement or life insurance plans, bank accounts, or life income gift such as a charitable gift annuity. Your commitment ensures that Lifetime Recovery will always have the resources needed to turn compassion into action.

BE A PART OF THE JOURNEY.
Ensure our future with your planned gift.

Journey Society  

MATTHEW L.



Client Success Story

With 14 months of sobriety, "I finally found inner peace and happiness."

Client Success Story

Matthew entered Lifetime's Residential Treatment facility on May 19, 2020 and was discharged on September 8, 2020. After treatment, he moved back to Corpus Christi from Pleasanton. He has since reunited with his son and found employment with Pro Tech Mechanical where he is a driver. A few months later, his employer sent him to school and he became a Crane Operator for the company. He is the first Crane Operator in their 21 year history. On May 1, 2021 Matthew married his best friend. He has gotten his health back, physically, mentally, and spiritually. He has also lost 60 pounds during the past year. With 14 months of sobriety Matthew says, "I finally found inner peace and happiness."



Partners in Recovery

This special group of donors make monthly contributions to support our treatment programs and services. Imagine the support you can provide to individuals in need of substance use treatment when many of you come together in this way. As a Partner in Recovery, every week, month or quarter (whichever selected) partners will be automatically charged for their specified gift and can cancel their monthly commitment at anytime.

BECOME A PARTNER IN RECOVERY TODAY!



Join Lifetime's Monthly Giving Sustainer program to make treatment possible for many

Leadership Staff

David Phipps, MBA, President & Chief Executive Officer
John Welsh, Chief Operating Officer
Shirley Siler, CPA, Chief Financial Officer
Diana Reyes, CFRE, VP, Development & Community Engagement

Board of Directors

Rudy Lopez, Board Chair
Brandon Webb, Vice Chair
Trey Scott, Secretary
John Hornsby, Treasurer
Jeffrey Arndt
Jeffrey Butts
Jay Eisen
Don Hanson
Al Hartman III
Cynthia Hernandez
Kay Mijangos
G. Sterling Zinsmeyer

THE HOPE IS REAL



United Way of San Antonio
and Bexar County

Lifetime RECOVERY

Chemical Dependency Treatment Center

Donate Today

www.lifetimerecoverytx.org
(210) 734-6362



Admissions and Community
Counseling Center
96 Crossroads Blvd,
San Antonio, TX 78201

Administration
PO Box 5968
San Antonio, Texas 78201-5968

Residential Campus
10290 Southton Road
San Antonio, Texas 78223